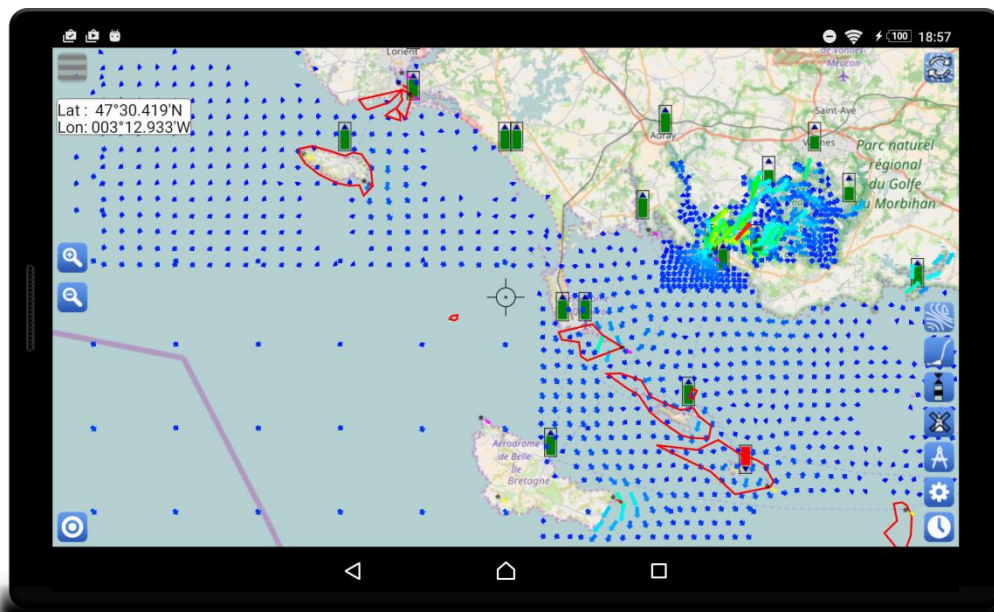


SailGrib WR

Atlases of tidal currents

SailGrib WR now includes tidal current atlases for the European coasts. These atlases were compiled using data provided by the Mercator Ocean models. They cover all the European coasts where tidal currents are the main ones and are therefore relatively predictable. It does exclude currents for the Baltic and the Mediterranean seas. For these two seas, grib files are available.

If you are looking for more precision, you can buy through in-app purchases, atlas of tidal currents packs produced by the SHOM. They cover the French side of the English Channel and the French Atlantic coast.

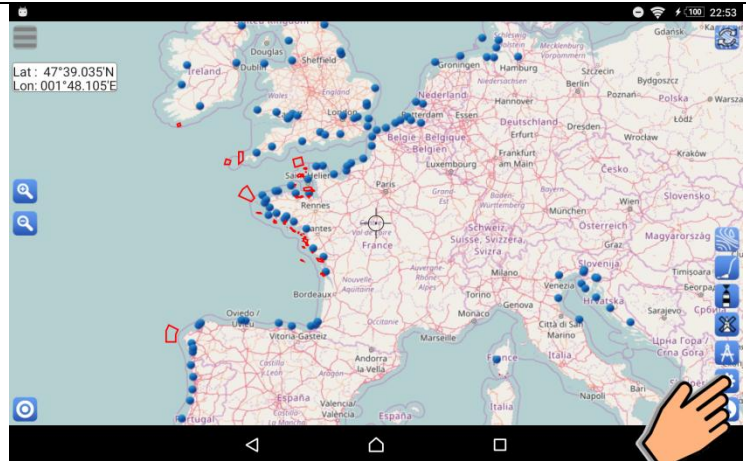


Summary

1. Purchase a pack of tidal currents atlases	2
2. SHOM atlases.....	7
3. SailGrib atlases	10

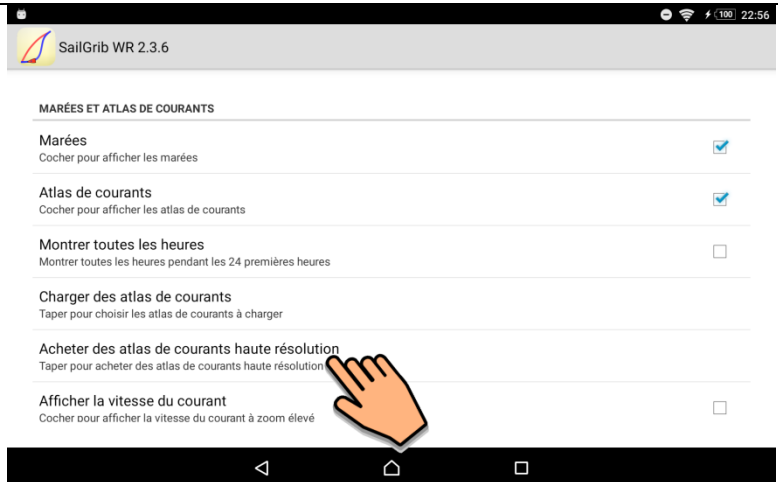
1. Purchase a pack of tidal currents atlases

Press the
"Settings"
button



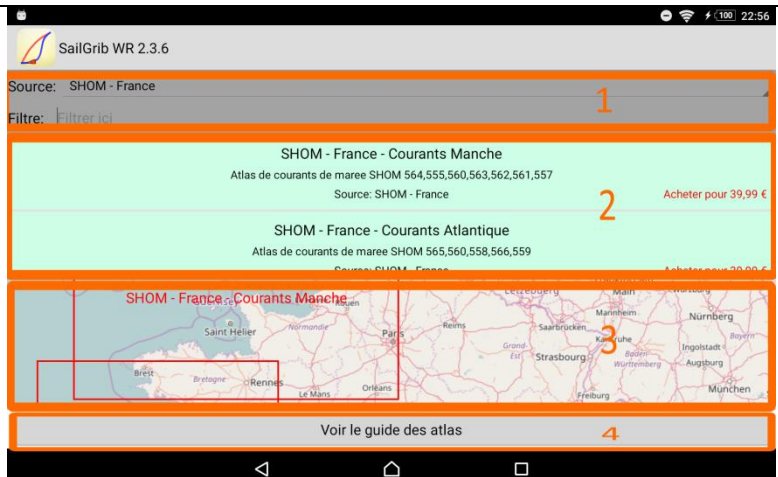
Go down to the
« TIDES AND ATLAS OF TIDAL
CURRENTS »

Press
« Purchase HR current packs »



The main screen shows up. It is divided in 4 zones.

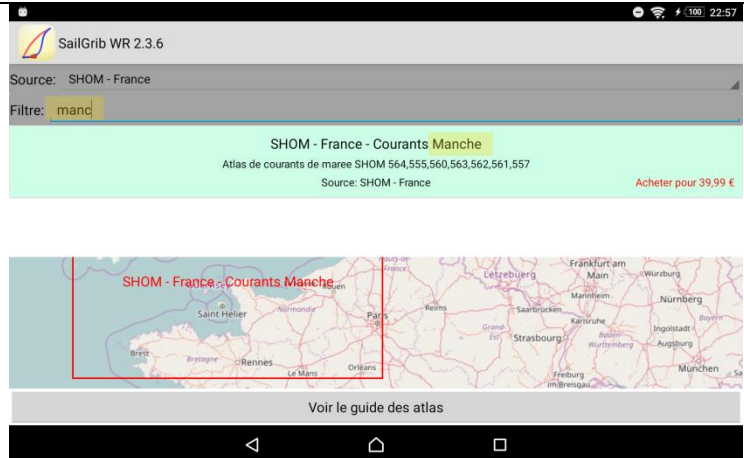
1. Filters :
 - by Source (SHOM)
 - free texte (for exemple Manche)
2. Packs of atlases list
 1. Map showing the atlas bounds
 2. Button to display this guide



Eventually filter the list

- The list might already be filtered by the Source
- Enter for example, **Manche** in the free text filter to only keep atlases that contain Manche in their name.

Hide the keyboard using the back button

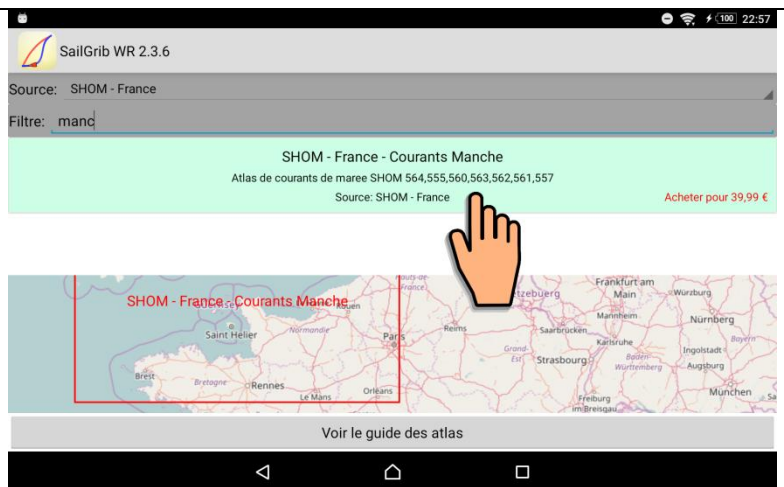


Purchase or download an atlas by pressing it in the list.

Here, we purchase the **SHOM France – Courant Manche** Pack for 39.99€ TTC.

The price is set in € and converted on the fly to the local currency of the country of purchase.

This pack includes the SHOM 557, 560, 561, 562, 563, 564 atlases

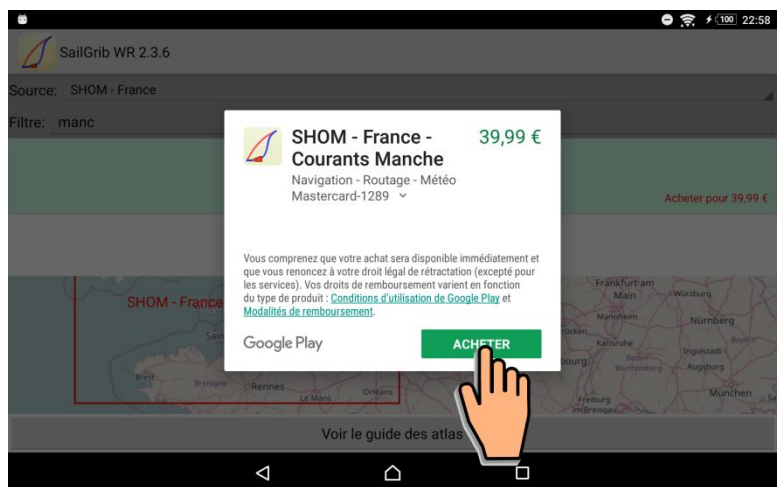


The confirmation screen shows up.

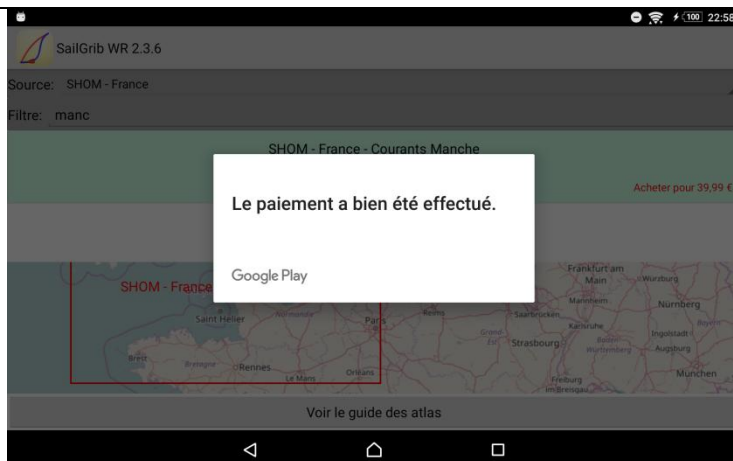
Press the **BUY** button to confirm the purchase.

Here, the MasterCard is already registered with the Google Play store. If your card is not registered yet, you will have to enter its details now.

Eventually enter your Gmail password and press the **Done** key on the.



A confirmation screen shows up.

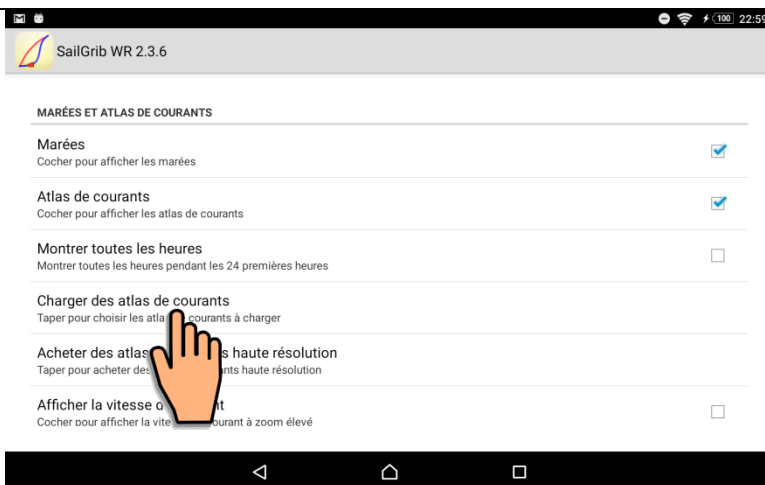


The entire process is completed after pressing the **Ok** button.

Quit the screen by pressing the **Back** button



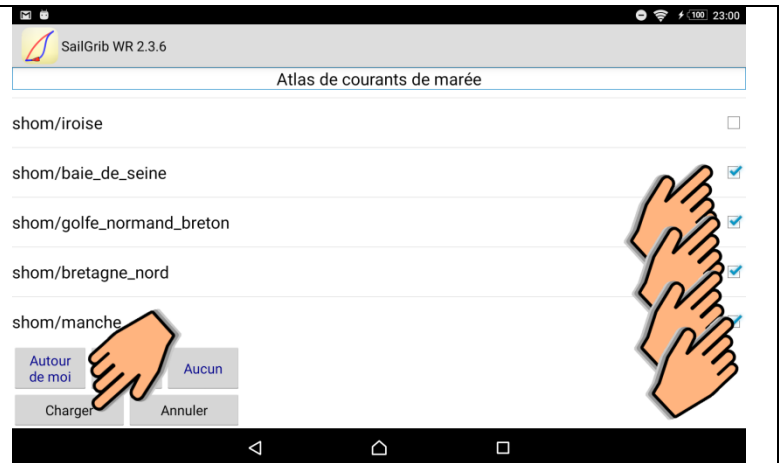
We are back in the Settings screen, press **« Load atlases of currents »** to select the atlas you want to show.



Select your atlases, here :

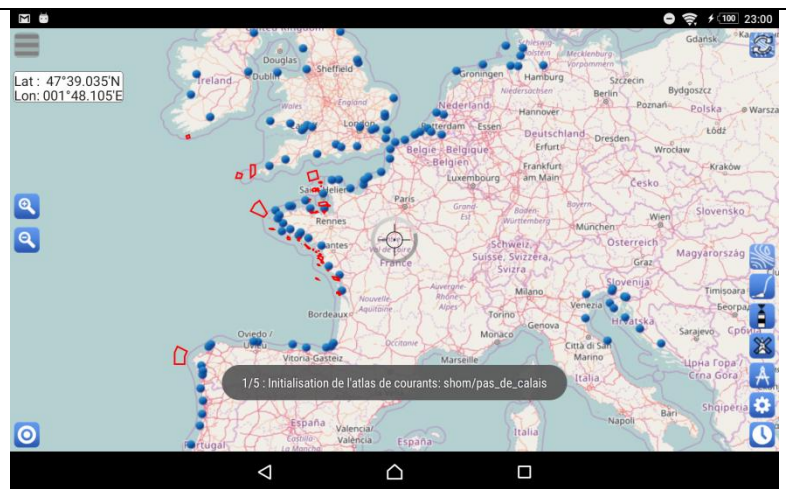
- shom/iroise
- shom/baie_de_seine
- shom/golfe_normand_breton
- shom/bretagne_nord
- shom/manche
- ...

And press the « Load » button



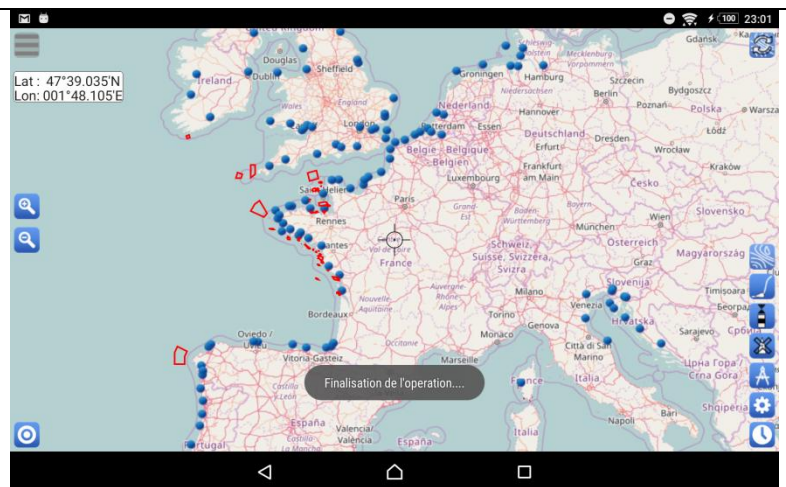
The atlases are loaded in the app current database. They were already on the device but not loaded.

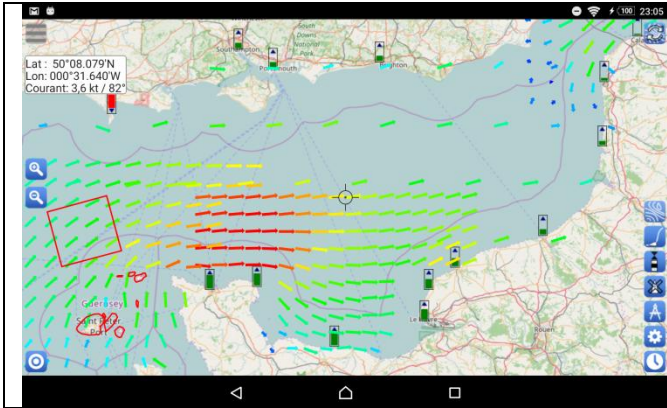
Only load the atlases you need. Loading more atlases might slow down the app.



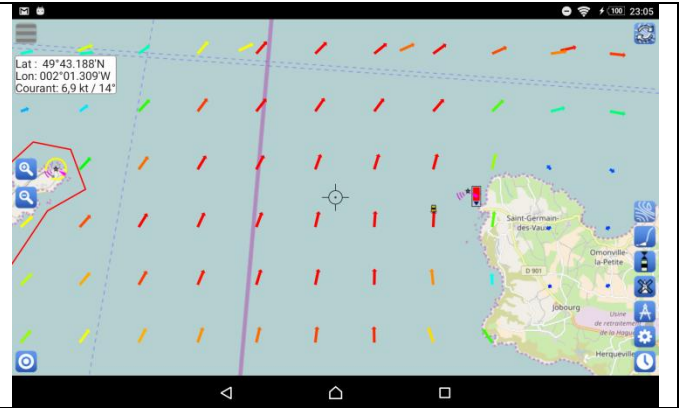
Atlases are loaded.

This process has to be done only once.





Shom atlases of tidal currents for the Channel



Zoom towards the Raz Blanchard



The bay of Brest



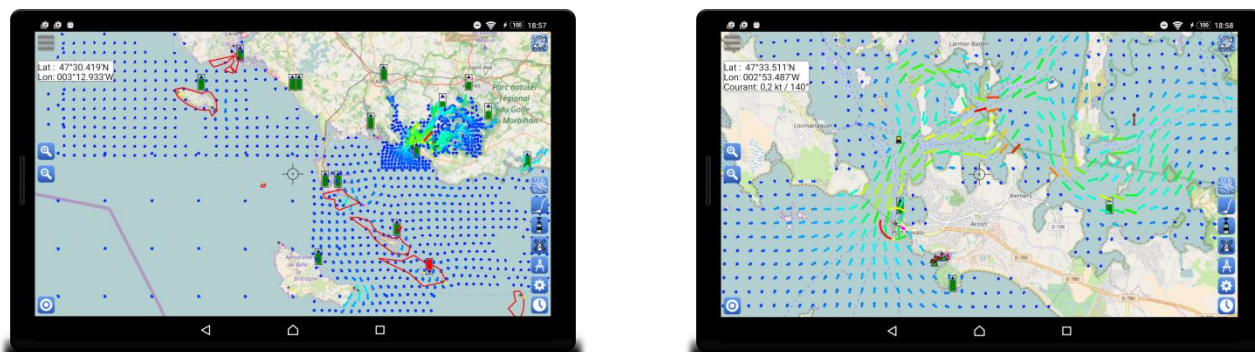
The "raz de Sein"

2. SHOM atlases

The French SHOM publishes a set of atlases of tidal currents for coasts of metropolitan France: the English Channel and the Atlantic. They map out the direction and intensity of the tidal currents for every “tidal” hour with reference to a specific harbor. These atlases are compiled from digital models and then validated in situ. Each atlas may contain different areas of different scales.

For example, the 558 atlas covers the South coast of Brittany from Audierne to le Croisic. It contains the following zones: Glénan, Groix, Quiberon, Morbihan and south Brittany.

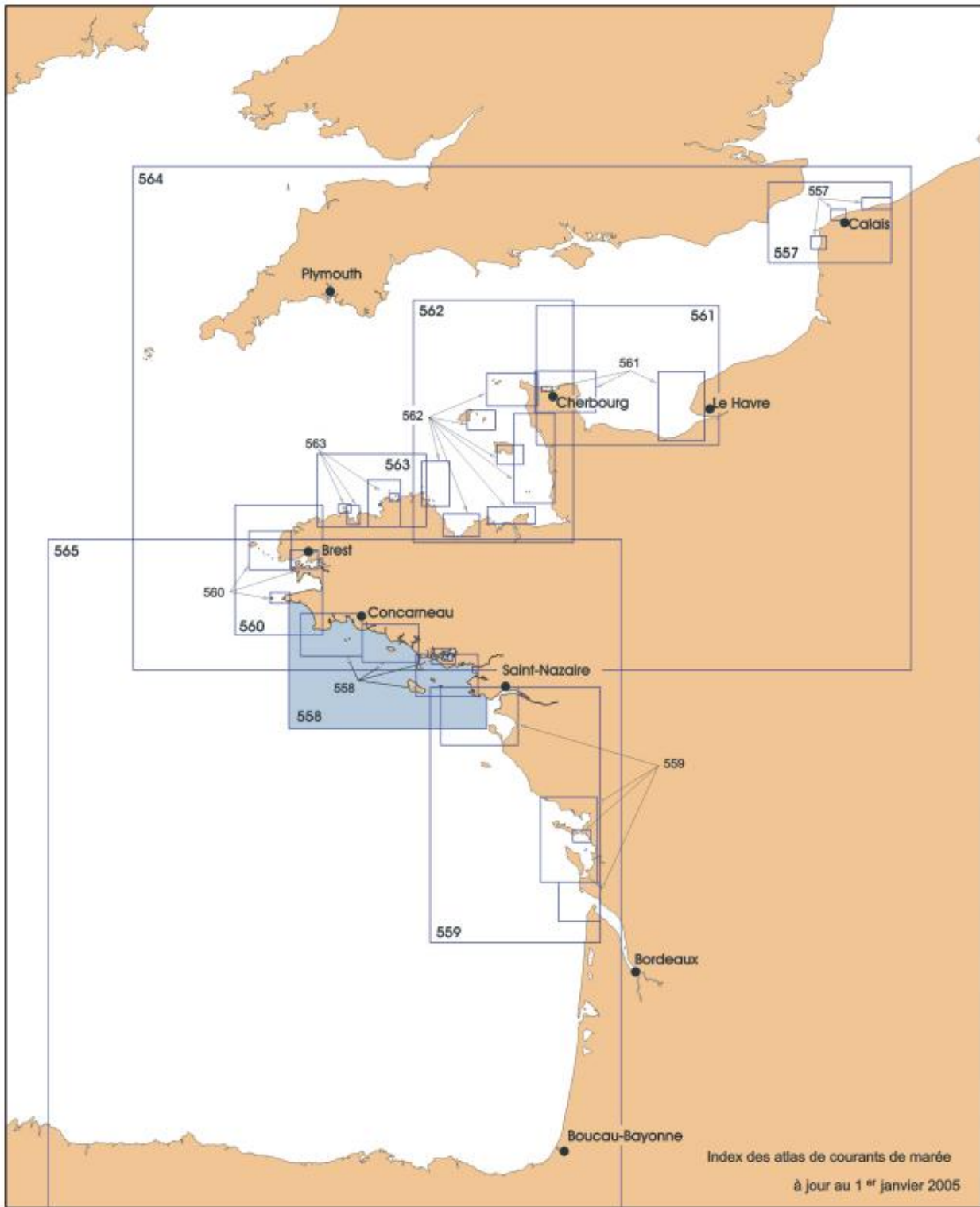
In sensitive areas such as the entrance of the Gulf of Morbihan, these atlases are much more accurate than those provided free of charge in the app.



Atlas 558 – Golfe du Morbihan details

The atlases are sold into 2 "packs", one for the Channel one for the Atlantic coasts of France. Each pack is offered at the price €33 HT. The price depends on the country of purchase. It is € 39.99 for purchases made from the France.

Atlas	Area	Pack Manche	Pack Atlantique
557	Pas de Calais / Baie de Somme - De Fécamp à Dunkerque	✓	
558	Côte Sud de Bretagne, d'Audierne au Croisic		✓
559	Côte Ouest de France, de Saint-Nazaire à Royan		✓
560	Mer d'Iroise - De l'Île Vierge à la pointe de Penmarc'h	✓	✓
561	Baie de Seine, de Cherbourg à Fécamp	✓	
562	Golfe Normand - Breton, de Cherbourg à Paimpol	✓	
563	Côte Nord de Bretagne, des Héaux-de-Bréhat à la Pointe de Pontusval	✓	
564	La Manche, de Dunkerque à Brest	✓	
565	Golfe de Gascogne		✓
566	Pays de la Loire		✓



Index of Shom tidal currents

Here is a list of the different atlases included.

Atlas	Zone
557 - Pas de Calais / Baie de Somme - De Fécamp à Dunkerque	pas_de_calais
557 - Pas de Calais / Baie de Somme - De Fécamp à Dunkerque	dunkerque
557 - Pas de Calais / Baie de Somme - De Fécamp à Dunkerque	calais
557 - Pas de Calais / Baie de Somme - De Fécamp à Dunkerque	boulogne
558 - Côte Sud de Bretagne, d'Audierne au Croisic	bretagne_sud
558 - Côte Sud de Bretagne, d'Audierne au Croisic	glenan
558 - Côte Sud de Bretagne, d'Audierne au Croisic	groix
558 - Côte Sud de Bretagne, d'Audierne au Croisic	quiberon
558 - Côte Sud de Bretagne, d'Audierne au Croisic	morbihan
559 - Côte Ouest de France, de Saint-Nazaire à Royan	vendee_gironde
559 - Côte Ouest de France, de Saint-Nazaire à Royan	loire_bourgneuf
559 - Côte Ouest de France, de Saint-Nazaire à Royan	gironde
559 - Côte Ouest de France, de Saint-Nazaire à Royan	pertuis_charentais
559 - Côte Ouest de France, de Saint-Nazaire à Royan	la_rochelle
560 - Mer d'Iroise - De l'Île Vierge à la pointe de Penmarc'h	iroise
560 - Mer d'Iroise - De l'Île Vierge à la pointe de Penmarc'h	ouessant
560 - Mer d'Iroise - De l'Île Vierge à la pointe de Penmarc'h	sein
560 - Mer d'Iroise - De l'Île Vierge à la pointe de Penmarc'h	rade_brest
561 - Baie de Seine, de Cherbourg à Fécamp	barfleur
561 - Baie de Seine, de Cherbourg à Fécamp	cherbourg
561 - Baie de Seine, de Cherbourg à Fécamp	baie_de_seine
561 - Baie de Seine, de Cherbourg à Fécamp	le_havre
562 - Golfe Normand - Breton, de Cherbourg à Paimpol	golfe_normand_breton
562 - Golfe Normand - Breton, de Cherbourg à Paimpol	hague
562 - Golfe Normand - Breton, de Cherbourg à Paimpol	guernsey
562 - Golfe Normand - Breton, de Cherbourg à Paimpol	jersey
562 - Golfe Normand - Breton, de Cherbourg à Paimpol	granville
562 - Golfe Normand - Breton, de Cherbourg à Paimpol	saint_malo
562 - Golfe Normand - Breton, de Cherbourg à Paimpol	brieuc
562 - Golfe Normand - Breton, de Cherbourg à Paimpol	brehat
563 - Côte Nord de Bretagne, des Héaux-de-Bréhat à la Pointe de Pontusval	bretagne_nord
563 - Côte Nord de Bretagne, des Héaux-de-Bréhat à la Pointe de Pontusval	7iles_lannion
563 - Côte Nord de Bretagne, des Héaux-de-Bréhat à la Pointe de Pontusval	perros_guirec
563 - Côte Nord de Bretagne, des Héaux-de-Bréhat à la Pointe de Pontusval	trebeurden
563 - Côte Nord de Bretagne, des Héaux-de-Bréhat à la Pointe de Pontusval	morlaix
563 - Côte Nord de Bretagne, des Héaux-de-Bréhat à la Pointe de Pontusval	batz
563 - Côte Nord de Bretagne, des Héaux-de-Bréhat à la Pointe de Pontusval	roscoff
563 - Côte Nord de Bretagne, des Héaux-de-Bréhat à la Pointe de Pontusval	bloscon
564 - La Manche, de Dunkerque à Brest	manche
565 - Golfe de Gascogne	gascogne

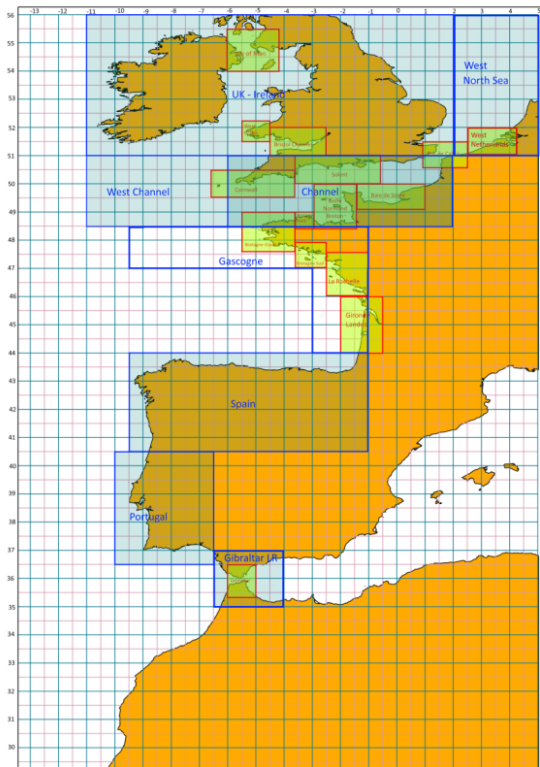
3. SailGrib atlases

SailGrib WR now includes tidal current atlases for the European coasts. These atlases were compiled using data provided by the Mercator Ocean models. They cover all the European coasts where tidal currents are the main ones and are therefore relatively predictable. It does exclude currents for the Baltic and the Mediterranean seas. For these two seas, grib files are available.

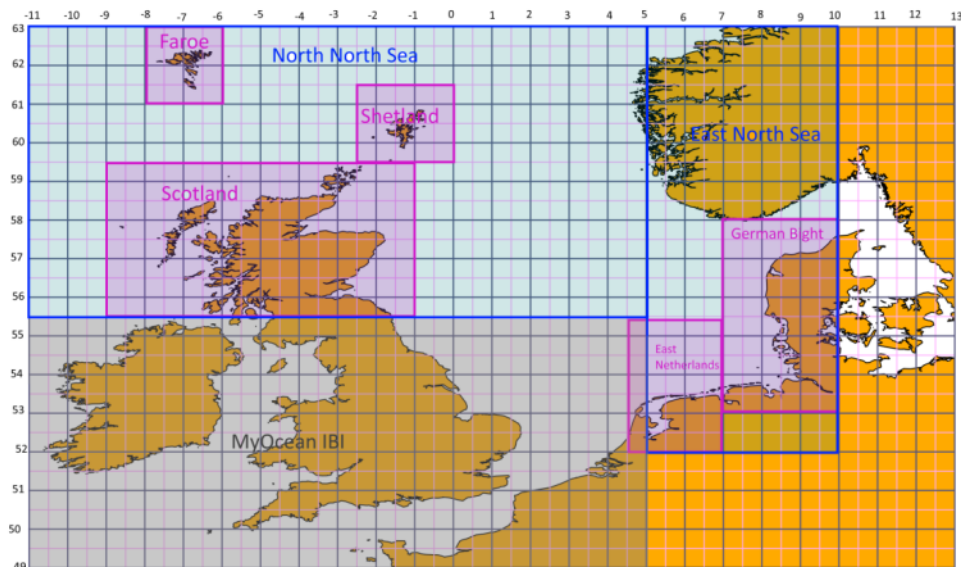
The atlases were compiled at different scales:

- Maximum resolution for areas where tidal currents are important
- Resolution 0.2 ° elsewhere.

The following atlases are included:



Current atlases compiled from the MyOcean model



Current atlases compiled from the MyOcean ENWS model

Name	Model	North Latitude	South Latitude	West Longitude	East Longitude	d_lat	d_lon
Gironde Landes HR	IBI	46.0°	44.0°	-2.0°	0.5°	0.03°	0.03°
La Rochelle Vendee HR	IBI	47.6°	46.0°	-2.5°	-1.0°	0.03°	0.03°
Bretagne Sud HR	IBI	47.8°	47.1°	-3.7°	-2.5°	0.03°	0.03°
Bretagne Ouest HR	IBI	49.0°	47.6°	-5.5°	-3.7°	0.03°	0.03°
Bretagne Nord HR	IBI	49.0°	48.4°	-3.7°	-2.9°	0.03°	0.03°
Golfe Normand Breton HR	IBI	50.0°	48.4°	-2.9°	-1.4°	0.03°	0.03°
Baie de Seine HR	IBI	50.0°	49.2°	-1.4°	1.0°	0.03°	0.03°
Pas de Calais HR	IBI	51.5°	50.6°	0.8°	2.5°	0.03°	0.03°
West Netherlands HR	IBI	52.0°	51.0°	2.5°	4.2°	0.03°	0.03°
Solent HR	IBI	51.0°	50.0°	-3.7°	-0.7°	0.03°	0.03°
Cornwall HR	IBI	50.5°	49.5°	-6.7°	-3.7°	0.03°	0.03°
Bristol Channel HR	IBI	52.0°	51.0°	-4.5°	-2.5°	0.03°	0.03°
West Wales HR	IBI	52.2°	51.5°	-5.5°	-4.5°	0.03°	0.03°

Isle of Man HR	IBI	55.5°	54.0°	-6.0°	-4.2°	0.03°	0.03°
Gibraltar HR	IBI	36.5°	35.3°	-6.0°	-5.0°	0.03°	0.03°
UK Ireland 0.2°	IBI	56.0°	51.0°	-11.0°	2.0°	0.20°	0.20°
Channel 0.2°	IBI	51.0°	48.5°	-6.0°	2.0°	0.20°	0.20°
Spain 0.2°	IBI	44.0°	40.5°	-9.5°	-1.0°	0.20°	0.20°
Portugal 0.2°	IBI	40.0°	36.5°	-10.0°	-6.5°	0.20°	0.20°
Gibraltar LR 0.2°	IBI	37.0°	35.0°	-7.0°	-4.0°	0.20°	0.20°
West Channel 0.2°	IBI	51.0°	48.5°	-11.0°	-6.0°	0.20°	0.20°
Gascogne 0.2°	IBI	48.5°	44.0°	-9.5°	-1.0°	0.20°	0.20°
West North Sea 0.2°	IBI	56.0°	51.0°	2.0°	5.0°	0.20°	0.20°
East Netherlands HR	ENWS	56.0°	52.0°	4.6°	7.0°	0.07°	0.11°
German Bight HR	ENWS	58.0°	53.0°	7.0°	10.0°	0.07°	0.11°
Scotland HR	ENWS	59.5°	55.5°	-9.0°	-1.0°	0.07°	0.11°
Faroe HR	ENWS	63.0°	61.0°	-8.0°	-6.0°	0.07°	0.11°
Shetland HR	ENWS	61.5°	59.5°	-2.5°	0.0°	0.07°	0.11°
North North Sea 0.2°	ENWS	63.0°	55.5°	-11.0°	5.0°	0.20°	0.20°
East North Sea 0.2°	ENWS	63.0°	52.0°	5.0°	10.0°	0.20°	0.20°

All these atlases are available in the paid application. However, you must initialize them in the application. On first use, the application offers to do so. You can change the set of loaded atlases at any time via the "Settings" menu by selecting "Load atlases currents."

Loading atlases is a long procedure; it may take up to 5 minutes.